

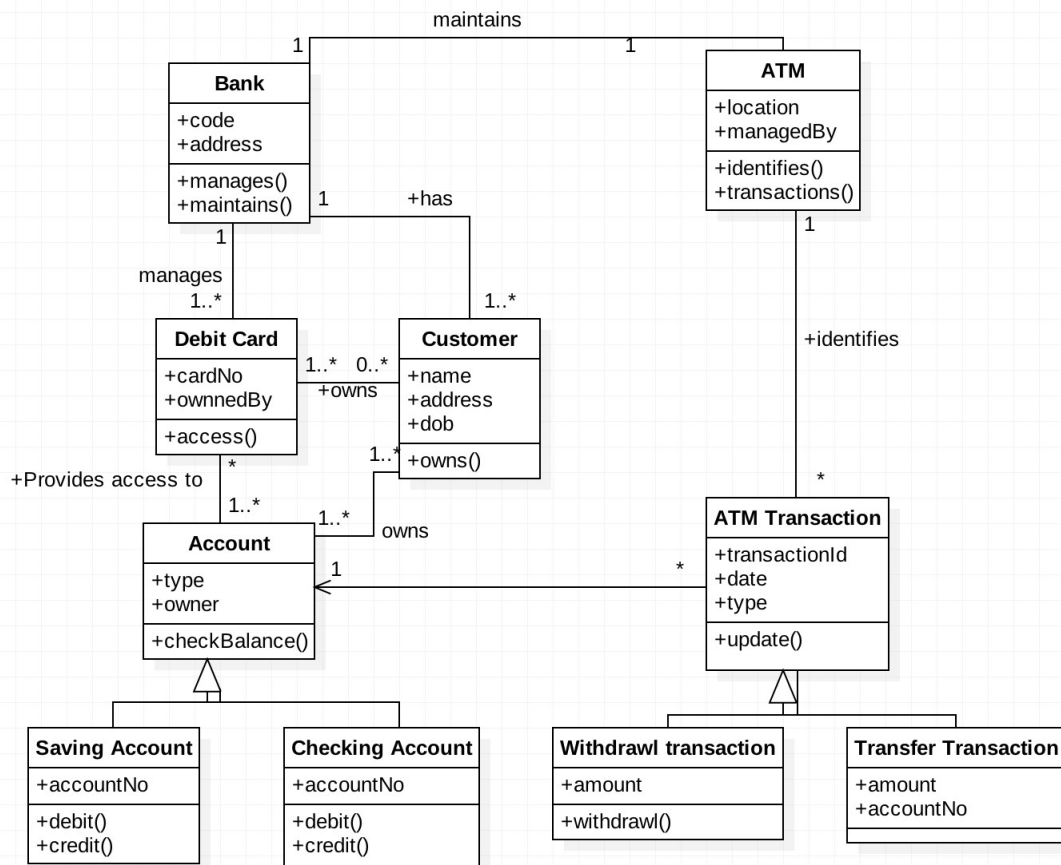
UML Diagrams for ATM System

For Data: Class diagram

Class Diagram:- Class diagrams describe the static structure of a system, or how it is structured rather than how it behaves.

These diagrams contain the following elements:

1. Classes , which represent entities with common characteristics or features. These features include attributes, operations, and associations.
2. Associations , which represent relationships that relate two or more other classes where the relationships have common characteristics or features. These features include attributes and operations.



For Function: Use case, Sequence, Collaboration/Communcation

Use Case Diagram: Use case diagrams describe the functionality of a system and users of the system. They contain the following elements:

1. Actors , which represent users of a system, including human users and other systems
2. Use cases , which represent functionality or services provided by a system to users

Here, is a use case diagram for the ATM System.

